

# Lofoten Hiking Experience

Summer



photo: Joanna Borgiel

# The Lofoten archipelago

The Lofoten Islands form an archipelago located north of the Arctic Circle. This treasure of nature offers breath-taking mountain landscapes and deep blue fjords. The climate is particularly mild here, thanks to the Gulf Stream bordering its coastline.

« The beauty of this place is simply astounding. »  
— **Lonely Planet**



# Henningsvær

THE VENICE OF THE LOFOTEN

For the past three years, the town of Henningsvær has been our homeport of choice during this unique trip, lead by the Guide Val d'Aran team and several local professionals who enable a genuine and warm meeting.

Henningsvær is a fishing village of 500 inhabitants, surrounded by the waters of the fjord and located south of the Lofoten archipelago.

Its reputation matches up its beauty: splendidous landscapes, typical colorful houses, local people...



# Our philosophy

PASSION . AUTHENTICITY. HOSPITALITY

Our trips are planned, developed and executed by a passionate team. Thus the relevance given to the human aspect and attention to details in each and every project we take on.

Our trips define us: in a thoroughly selected area, we propose quality routes, with exclusive cuisine and accommodation.



## SUMMARY

- 6 days of technical mountain hiking.
- Complementary activities included: 1/2 day Rib Safari and 1/2 day kayak.
- Full board in Henningsvaer at Lofoten Playground Lodge
- All Dinners by our Chef Johan Petrini.
- All transfers in Lofoten included with driver, including pick-up and transfer from/to Harstad airport.

# Lofoten Experience Trip

## Summer 2019

“A trip that will make your dreams a reality”

Our **Lofoten Hiking Experience** program is designed to carry out 6 days of technical hiking activity (minimum 1,000 meters of altitude per day), crossings ridges and basic mountain climbing to enjoy these incredible mountains with alpine character.

The proposal is based on a group of **6 people led by a UIAGM mountain guide**. The Lodge is for a maximum of 10 clients, so you may possibly be sharing the accommodation with another group.



### IN SUMMARY:

- 6 days of Technical mountain Hiking.
- Easy ridges and crests.
- Narrow and aerial ridges.
- Climbing basic to moderate difficulty in vertical terrain, grades III° and IV°. Mandatory use of rope at times.
- About 1000 vertical meters each day.
- A good physical condition is necessary.
- This program is a proposal that can be adapted according to your level.
- If you want to do more technical activity is feasible with even smaller groups.



# Program

## DAY BY DAY

Our trip is planned on a basis of 8 days (from Sunday to Sunday normally).

The ideal situation of the Lodge in Henningsvaer allows us to move quickly to the most emblematic mountains on these islands.

### **DAY 1 . Travel to Harstad / Evenes from your departure airport. Transfer to Henningsvaer.**

Welcome at the airport and transfer to Henningsvaer to stay at our exclusive lodge where you will spend 7 nights.

Welcome dinner, briefing and planning of the week activities to be carried out in the mountains and of the other included activities.

### **DAY 2 to 7. Days of activity in the mountains.**

6 days of technical mountain hiking including easy ridges and basic climbing.

Each day you will access different mountains and valleys of these Islands to ascend to their wonderful alpine peaks. More or less 1,000 meters of positive height gain will be done per day.

Examples of activity:

Climbing to one of Norway's granite icon pillars in the capital of Lofoten, Svolvær called Svolværgeita ("The Goat"). This ascent can be made following different routes with climbing options for beginners through to experts. It is one of the most mythical climbs in Norway and the views when reaching the top will make the effort well worth it.

Crossing the ridges of the Geitgalien massif.



The program also includes: 1/2 day excursion with Rib Safari, speedboats to discover these Islands by sea, and Kayak activity available at the Lodge.

### **DAY 8 Return to the airport**

Return transport from Henningsvæer to Harstad / Narvik Airport (Evenes).

# Photos from Complementary Activities



Rib Safari



Kayak Henningsvaer



Rib Safari Aguila Mar



Excursion Trekking y vistas

# Accommodation

A SCANDINAVIAN LODGE. COMFORTABLE. ADJUSTABLE

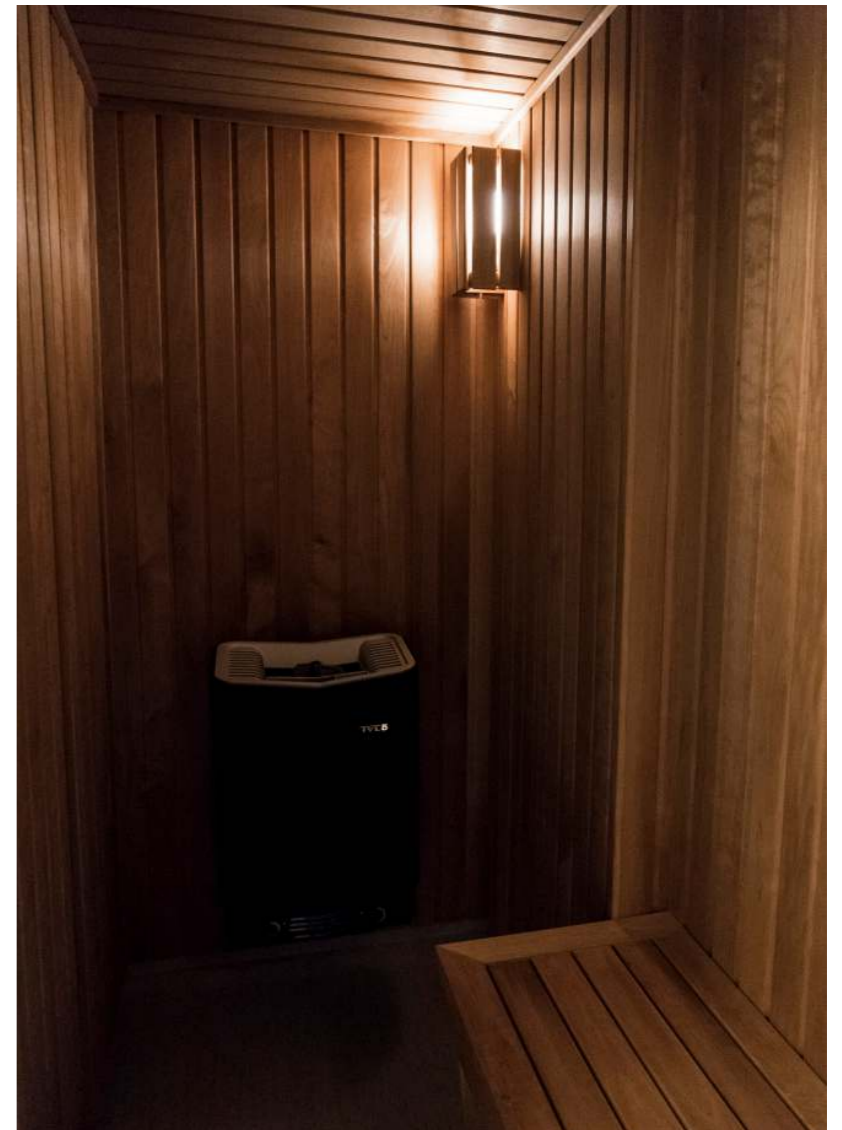


The lodge is much more than the base camp: it's the neuralgic centre, the cosy nest, the place to share...and it absolutely measures up to the experience we wish to offer you: it is as authentic as it is comfortable.

Ideally situated in the heart of our playground in Henningsvær, the lodge is one of the oldest fishermen house in the port. Today, it has been renovated thinking on every single detail to offer you the experience.







It consists of two living rooms, five bedrooms and four bathrooms, distributed on two floors. A lodge ready to offer you all the necessary comfort

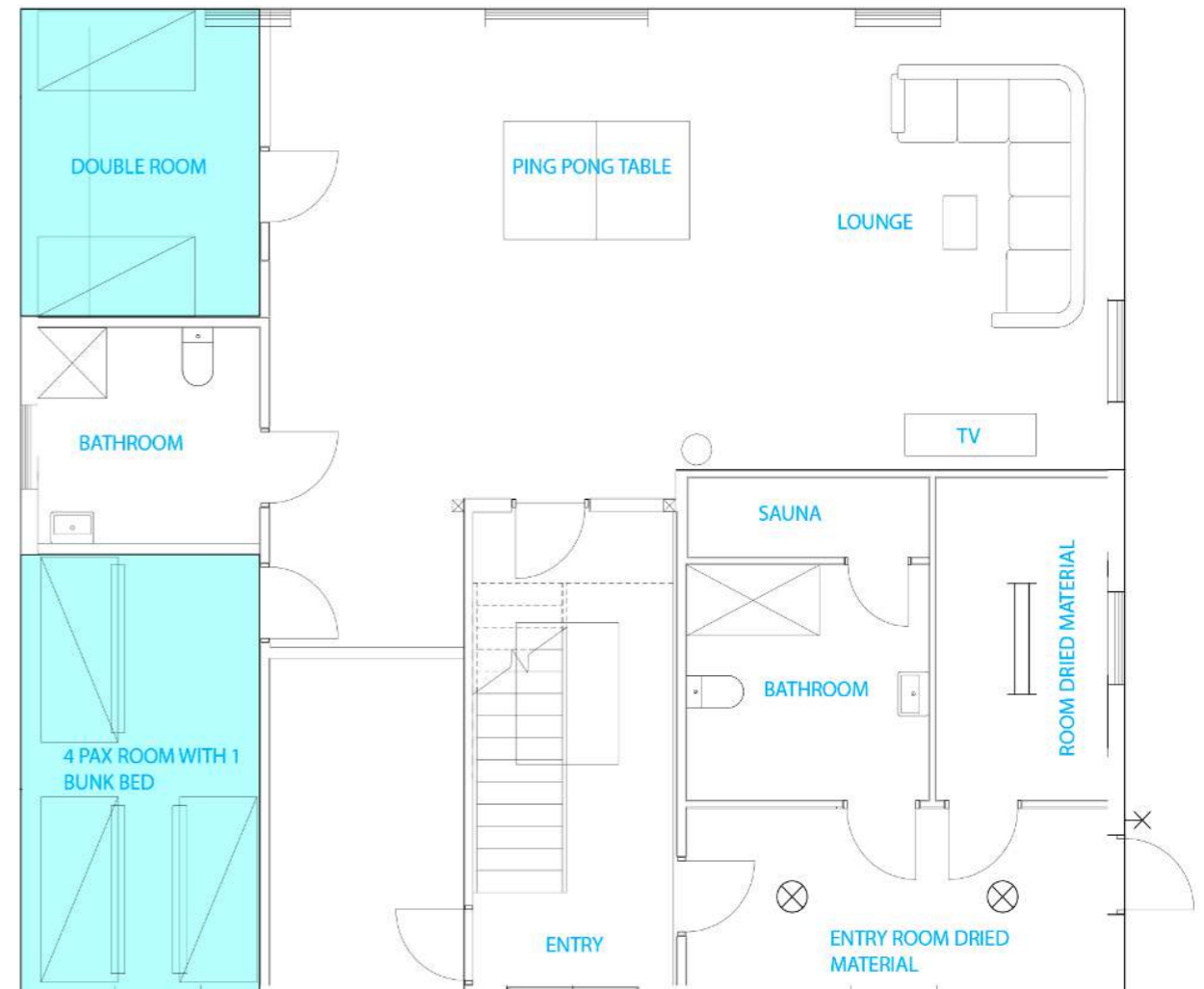
OUR  
STRENGTHS

- . Sauna
- . Drying room (boots, gear...) . Blackcrows ski test
- . High speed Wifi
- . Ski repair workshop
- . Ocean kayaks

LODGE PLAN . 1st Floor



LODGE PLAN . Ground floor



PLAN

- . 5 Bedrooms
- . 2 Living-rooms
- . 4 Bathrooms
- . 1 Kitchen
- . 1 Drying room
- . 1 Sauna
- . 1 Chill out (TV, ping-pong table,...)

# Johan Petrini, our chef

PROFESSIONAL. NORWEGIAN. KIND



An elaborated local cuisine.

*Is there anything better than arriving in the lodge than a relaxed appetizer followed by dinner in good company?*

Every night, Johan Petrini, our Norwegian chef, elaborates a meal consisting of three courses. This exclusive menu, prepared with fine fresh products, enables you to discover typical local products.

A treat for high-end cuisine lovers...

OUR  
STRENGTHS

- . A chef ready to meet your wishes and demands.
- . Wine cellar: the menu can be served with wines paired to the flavours proposed by Johan, previously hand-picked for us by a wine association.
- . It is possible to watch the chef while he prepares the meals.

Follow Johan on the social networks !

Instagram / Facebook : [@bypetrini](#)

« Each night, Johan Petrini elaborates a meal based on fresh local products.»



# Our rates

FLEXIBILITY. ADAPTABILITY



## CLASSIC

Based on groups from 2 to 6 persons sharing the Lodge.

### It includes:

- **7 nights** at our Lodge Lofoten Playground
- **Full board** with our dinners created by Johan Petrini.
- **6 days of technical hiking activity**, easy ridges and basic climbing III / IV
- Positive daily gain +/- 1,000 meters .
- **1 UIAGM high mountain guide** and a driver for each group.
- Vehicle for **all transfers** from the arrival to Lofoten until the departure, driven by the guide
- 1/2 day Rib Safari Excursion from Henningsvaer.
- Kayaks Activity
- Sauna

### Not Included:

- Flights or drinks

**Price from 2.390 €**

(based on a 6 people group\*)

Dates available for this program:

August / September

\* If you would like other dates, please contact us.

# Contact

OUTDOOR PLAYGROUND AGENCY

Contact us for further information:

Outdoor Playground Travel Agency

Tel: 00376 670751

Mail: [info@outdoorplaygroundtravel.com](mailto:info@outdoorplaygroundtravel.com)

THANKS

A trip organized by: Outdoor Playground Travel Agency, S.L  
In collaboration with Guide Val d'Aran

